

# District 7570 Club Analysis Report

# Clarke County

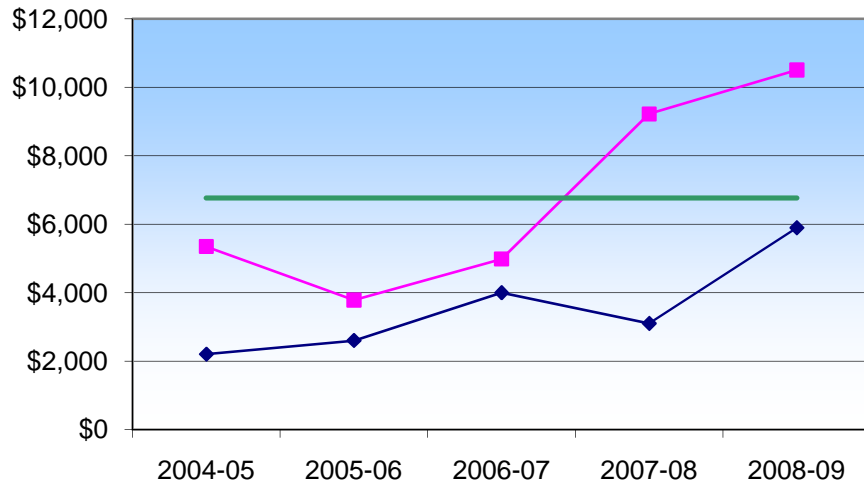
Clarke County

Click on the Club Name in the field above to select a report.

Annual Programs Fund Goal	
2008-09	\$5,900
2007-08	\$3,100
2006-07	\$4,000
2005-06	\$2,600
2004-05	\$2,200

Annual Programs Fund Contributions	
2008-09	\$10,505
2007-08	\$9,223
2006-07	\$4,985
2005-06	\$3,785
2004-05	\$5,350

Total Contributions	
2008-09	<b>\$13,972</b>
2007-08	\$12,123
2006-07	\$6,601
2005-06	\$5,138
2004-05	\$7,551



APF Per Capita		
2008-09	Club \$300	District \$113
2007-08	\$264	<b>\$115</b>
2006-07	\$172	\$102
2005-06	\$165	\$92
2004-05	\$255	\$90

Membership	
2008-09	35
2007-08	35
2006-07	29
2005-06	23
2004-05	21

**Note:** The Benchmark amount is a four-year club average for contributions to the Annual Programs Fund between 2004-05 and 2008-09.

To view a current Club Recognition Summary, please use Member Access on the Rotary Business Portal or call our Contact Center toll free at 866-9-ROTARY (866-976-8279) or by email at [contact.center@rotary.org](mailto:contact.center@rotary.org).

	Sustaining Members	Double Sustaining	PHS Level
2008-09	35	19	1
2007-08	34	0	1
2006-07	29	4	0
2005-06	20	2	0
2004-05	12	3	1

**Note: Sustaining Members** reflect annual total contributions to APF/SHARE of \$100 to \$199.99. **Double Sustaining Members** reflect annual total contributions to APF/SHARE of \$200 to \$999.99. **PHS Level** contributions reflect total contributions to APF/SHARE of \$1000 or more.

